

# CLEARTEX ALUTREND<sup>®</sup>

## ALUPROFILE ENTRANCE MATTING



CLEARTEX

ALUPROFILE ENTRANCE MATTING SYSTEMS WITH VARIOUS INDOOR  
AND OUTDOOR TREADS FOR HEAVY, MEDIUM AND SMALL TRAFFIC



# CLEARTEX ALUTREND<sup>®</sup>

## ALUMINIUM PROFILE ENTRANCE MATTING SYSTEMS

THE RIGHT MATTING SYSTEM CAN CLEAN UP TO 96% OF ALL CONTAMINATION.  
**DON'T LEAVE DIRT ANY CHANCE, GET PREPARED!**

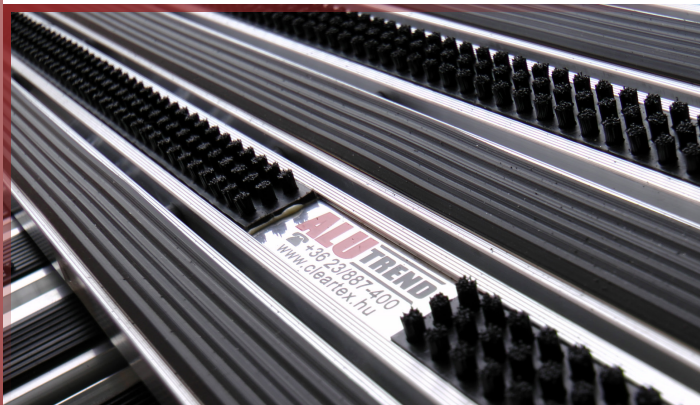


- INTEGRABLE ONTO ANY ENTRANCE
- FOR PEDESTRIAN AND WHEELCHAIR TRAFFIC
  - 3 ZONE DESIGN
- COUNTLESS AMOUNT OF QUALITY TREADS
  - INDIVIDUAL SIZES AND SHAPES

- BRUSH AND RIBBED RUBBER TREAD FOR OUTDOORS
  - SCRAPING FIBER TEXTILE FOR OUTDOORS
  - LIQUID ABSORBENT TEXTILE FOR INDOORS
    - INDIVIDUALLY PRINTED TEXTILES
    - MIXED TREAD DESIGN OPTION



- EFFECTIVE CLEANING TREADS
- ELEGANT AND DECORATIVE LOOK
- INDIVIDUAL OPTIONS OF IMPLEMENTATION
  - DURABLE STRUCTURE
  - LONG LIFETIME



1. | **PLAN** YOUR OWN ENTRANCE MATTING SYSTEM!
2. | **SEND YOUR PLANS** TO US AND LET'S THINK TOGETHER!
3. | **IN TWO WEEKS** EVERYTHING'S READY TO BE INSTALLED!



# TABLE OF CONTENTS

<b>General informations</b>	Cleartex and the Alutrend® matting systems	<b>3</b>
	Production, development, implementation	<b>4</b>
	Planning and the zone approach	<b>7</b>
<b>Alutrend products</b>	Alutrend® solutions according to zone approach	<b>9</b>
<b>Alutrend Outdoor</b>	Alutrend® Outdoor mats	<b>10</b>
	Outdoor treads	<b>10</b>
	Outdoor profiles	<b>11</b>
	Outdoor types	<b>11</b>
<b>Alutrend Indoor</b>	Alutrend® Indoor mats	<b>15</b>
	Indoor treads	<b>15</b>
	Indoor profiles	<b>16</b>
	Indoor types	<b>16</b>
<b>Alutrend specialities</b>	Specialities	<b>20</b>
	Individual builds	<b>20</b>
<b>Alutrend implementation</b>	Implementation options	<b>22</b>
	References	<b>23</b>
<b>Cleartex contact</b>	Contact	<b>23</b>

Cleartex Ltd. started the production of the Alutrend® entrance mats in 2006. In Hungary, the independent branded has already become known as a product of the highest quality. Over the past 10 years, the product and the production technology have improved even more. What remained is the top quality.

In the development of the Alutrend® mat systems the long life and efficiency was a very important aspect. The structure and the extent of the aluminum rails may make people remember of other manufacturers' products, but Cleartex strived for even more. Both, thickness and strength of the aluminum bases are being recognized as the highest quality in Hungary, so tensile strength and wall thickness are significantly higher. Uniquely on the market, Alutrend® Mini and Maxi products come with a 5 year warranty in the entrances of our customers, with a 100% customer satisfaction guarantee.

The Alutrend® mat systems had to meet several expectations, above all the market requirements have shifted from the direction of regular mats into the direction of consciously applied mat systems. The large traffic frequency of huge office buildings, shopping centers and leisure centers must be done enough. The latest development called the Alutrend® Compact had been released in the year 2016 as a decorative and favorable alternative, suitable for less frequented entrances.

The systems we like to call "dirt traps", do not differ much from regular door mats. Because of their application, they are called systems, which also results the main difference. In case of the home door mats, we trample our soles down several times. The system on the contrary works automatically.

The well designed dirt traps clean the soles automatically while walking. The unnoticeably functioning cleaning surface, first cleans larger, then smaller, solid dirt in the first and second zones, while in the third zone the liquids are being absorbed spongewise.





# ALUTREND

## HUNGARIAN MATTING WITH MANUFACTURER'S GUARANTEE

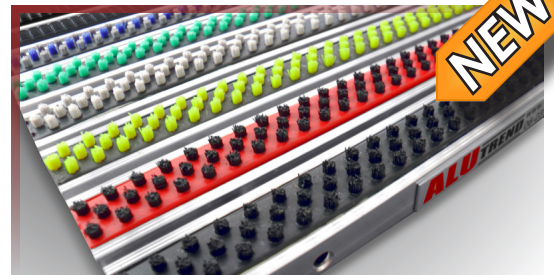
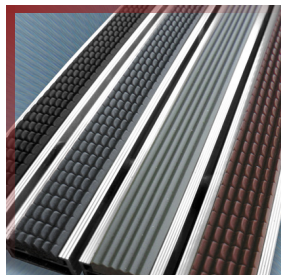
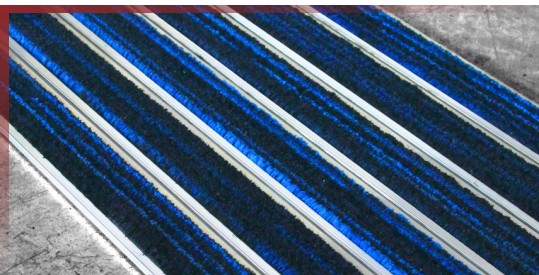
THE HUNGARIAN PRODUCTION WITH SATISFACTION GUARANTEE HAS MANY ADVANTAGES. **DON'T BE SATISFIED WITH LESS, BE UNIQUE!**



### VARIOUS PRODUCTION OPTIONS

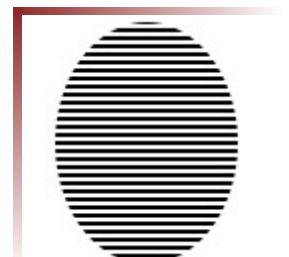
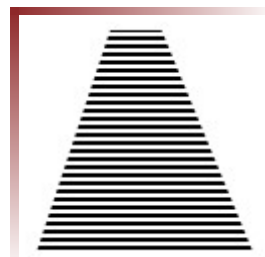
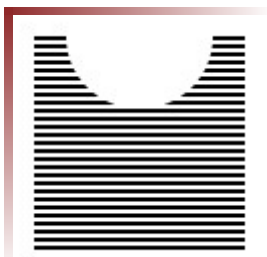
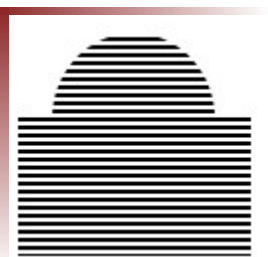
The aluminum rails can be equipped with different treads depending on the environment and design possibilities. When it comes to the zone approach, it is possible to insert countless treads to the variable indoor and outdoor mats systems. In addition to functionality, the required exclusivity also plays an important role. To implementation of the interior, nearly

40 kinds of high-quality colored textiles and 3 kinds of printable textiles are available. For the outdoor area and the middle zone, weather resistant brush, ribbed rubber, scratch fiber and individually printed artificial grass surfaces can be used. All of these treads can be combined with each other, depending on taste and effect.



Active textile, ribbed rubber and brush cleaning surfaces in elegant and cheerful colors

The shapes of the Alutrend® mats can differ from every conventional shape. Normal mats are usually rectangular, while Alutrend® products can be made round, convex or concave, excentrically, or from the inside or outside ovally shaped. The systems can consist of several components without stumbling.



Exclusive shapes to individualize entrances



## FLEXIBLE SERVICES

Alutrend® systems come with services being completely satisfactory for domestic and foreign construction - and facility managements. In addition to selecting surfaces, measurement of the area and planning of the aluprofiles themselves is crucially important. The development according to entry zone approach and the precise installation is a basic claim in

every structure to prevent missteps and gliding. Cleartex Ltd. and its distributors are available for any of your service needs. Our experts are willing to inform you about technical and commercial questions of Alutrend® entrance matting systems. For more information visit [alutrend.co.uk](http://alutrend.co.uk)!



## WHY ALUTREND?

There are many arguments speaking for Alutrend® entrance mats and some do against. We demonstrate these with real and test-based experiences as follows. In reality however, more and more customers decide for entrance matting systems - opposing to regular mats - in Hungary and other European countries as well.

This shows that Alutrend® is very popular and already has 80% market share in Hungary.

### Arguments that speak for Alutrend® entrance mats

One of the most important aspects of floor mats is their economic implementation. The Total Ownership Costs (TCO), might be a large number, but the life expectancy of the Alutrend® mat systems with aluminum rails is considerably longer, as regular textile or plastic mats without any structure, plus there's not more maintenance required as by conventional mats. Alutrend® is also unique in the market of aluminum profile mats, because it has the best features in terms of tensile strength and load bearing capacity. For Alutrend® Maxi and Mini models there are 5 years and for Compact there's 1 year warranty; in case of proper maintenance, the effective life time can be 10 years.

Basic function of entrance mats is to protect the floor indoors and reduce cleaning frequency. A well planned and designed matting system - in at least two zones - can remove up to 96% of dirt from soles. This number, in the case of freely installed ready-made mats, e.g. rented mats is a lot lower, which is about 20-30%. The reason is quite simple: on regular floor mats, the feet are being trampled down, while on a mat system at least 6-8 steps need to be done. Floor mats are generally made from only one material, but matting systems operate with multiple cleaning methods, where inner and outer zones are separated.

Alutrend® can be provided with many variations of the 6 surface types, e.g. brush surface, ribbed rubber surface, liquid absorbing and/or scratch-like textile surface; each can be designed individually. In case of rented mats, only 2-3 steps are being done in best case so cleaning effectiveness is much smaller. In the end it's clear that more cleaning has to be done and the inner floor surfaces are being damaged a lot more in this case. Also where cleaning of e.g. slush, mud is not that effective, there's a risk of slipping and doesn't look nice either, must be cleaned more often a day.

When calculating the total costs, there may be substantial differences between a long-lasting, effective mat and a rented, removable mat. The overall picture is not everything; purity, good impression, nicely organized interior cannot be measured in money amounts. A modern, well detailed interior with harmonious furnishings, but mismatching mats and dirty floor can be quite disappointing. First of all, because for the one who's going to see this for the first time, this image will be stored in the thought and thus the first impression is being created. In a commercial or financial institution, restaurant, hotel, leisure center, or theatre, the lack of order and hygiene can lead to deficit.



The Cleartex aluprofile mat systems give an elegant impression already at the entrance, be it classic or modern. The tailor-made production options, the excellent material application and the hygienic appearance of the Alutrend® products, which can be seen at first sight, make a clear difference in the entrance, be it bank, cinema, theatre or shopping centre. Of course not only the mat system

itself, but also the harmony between entrance and building are remarkable. The design of the Alutrend® mat systems can differ from any conventional form. Mats in general are rectangular, while Alutrend® mats can be curved, concave or convex from inside or outside. The system can also consist of several elements, they can be adapted stumble free onto dies. The parts of the entrance matting systems are easy to roll up, no special tools or expertise are required for maintenance. Cleaning is similar to that of regular carpets, but besides vacuuming, it's also possible to clean them with a water pressure cleaner.

### **Arguments that speak against Alutrend® entrance mats**

As the environment does not allow the installation of Alutrend® mats, we recommend a different solution as safety is the first requirement. For example, if it's not possible to form a completely flat surface for the drop-forge of the Alutrend® matting system, we recommend plastic module mats with textile fibers. Likewise, we do not recommend any mats, where the traffic is carried out with a heavy load-lifting mechanism. Alutrend® Maxi profiles have been developed for pedestrian, wheelchair and shopping cart traffic, where the point load is a lot less as in case of loaded hand-held lifting trucks.



## OUR RECOMMENDATIONS

The Alutrend® mat systems differ from conventional mats because of their effectiveness, giving the interior a better appearance and last but not least, when it comes to applying them, it is also much better when speaking of economic terms. These facts however, are strongly dependent on planning and construction, whereby the specialists of Cleartex Ltd.

are available to you with readiness and 100% satisfaction guarantee. With following specific planning advices we help you selecting and realizing the optimal matting system.



Graphisoft Park



MTK Budapest FC Stadium

## PLANNING

One of the critical points when planning a building, is the entrance. Only 3-4 collective parts of a giant, e.g. office building are being used frequently, which means 1% of the whole building's floor area. The entrance however, is being used by staff and clients several times a day. Therefore, it's not irrelevant how high the degree

of permeability of an entrance is, which kind of wind deflectors and matting systems are being used at the entrance and what kind of impression the foreground leaves.

The professional planning of an effective and economical entrance matting system takes place together with the planning of the building and the entrance itself; climate and environment taken into consideration. Of course, a matting can also be planned later, but the late solution carries additional expenses and less harmony. The clean-running zone approach as a planning theory thus serve as an effective solution.

- **What exactly is the zone approach?** Entrances can be divided onto several sections, depending on types of dirt to be cleaned. Therefore, it is recommended to use the treads going from the outside to the inside alternating in order to achieve the best possible cleaning and liquid absorbing effect.
- **Why should the entrance be designed according to zone approach?** The answer is quite simple, because the soles are being cleaned by step-like movements on the mats, while the mat systems automatically clean during the normal passage by simple walking.
- **How many sections does an optimal entrance matting have?** Basically this depends on the traffic, environment and size of the building, and the types of dirt being carried inside. The ideal clean-running zone consists of three cleaning zones.
- **What are the most important aspects when planning the mat system?** The most important is the best suiting surface to the number of steps and the surrounding area. For a rotary door, e.g. more steps are being done, than if this length had been passed in a barrier-free area.
- **Available treads:** For the outdoor area into the first zone, we recommend the **#brush** surface **with strong scratch effect** and **outdoor #textiles** or the **slip-resistant #ribbed rubber**. For the indoor area into the second zone, in addition to these, we recommend **moisture-absorbing #textile** surfaces. It is highly recommended to use mixed surfaces in this area. The third zone, farthest from the entrance, has actually only to absorb liquids and to fulfill decorative and marketing tasks through the use of printed textile.

## THE ZONE APPROACH

When it comes to the ideal implementation, the entrance can be divided into three zones. If the building of three zones is not possible, the design of two zones with mixed surfaces is recommended. The basic designing rules are following:

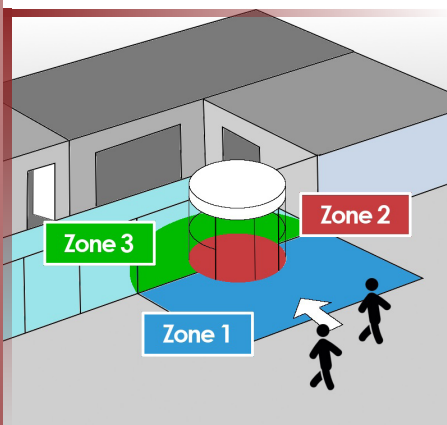
**Zone 1.**, The primary cleaning zone: **#Outdoor area** of the entrance, or directly at the door. The task here is to clean solid dirt and mud. The ideal cleaning surfaces for this area are the brush surfaces, because of their high weather resistance and strong cleaning effect.

**Zone 2.**, The secondary cleaning zone: **#Indoor area**, closest to the entrance door, **#rotary door** or **#wind deflector**. Here the task is to remove smaller solid and wet dirt and absorb moisture. In addition to the mud wiping function of the moisture absorbing textiles also the scratching effect does occur here, that's why the high liquid suction force and storage capability is very important here.

**Zone 3.**, The tertiary cleansing zone: **#Indoor area**, the most remote area from the entrance, otherwise also called **#foreground**. The main task here is to remove dirt from granule size and absorb moisture. In this zone, the fluid intake plays the most important role, also the principle of decoration, which is being offered through numerous textile surfaces and individually printed mats.

## CLEAN RUNNING ZONES

Each entrance is different, as are the shoe scraping habits and weather conditions themselves. The following examples illustrate three completely different cases.

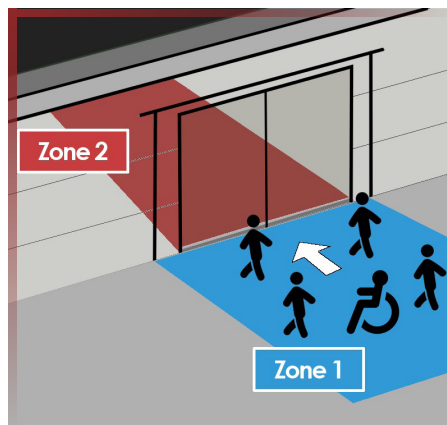


General office entrance with rotary door or wind deflector

Zone 1 | **#Outdoor area**  
Zone 2 | **#Rotary door**  
Zone 3 | **#Indoor area**

Cleaning surfaces

Zone 1 | **#brush, #ribbed rubber**, scratching fiber **#textile**  
Zone 2 | **#brush, #ribbed rubber**, liquid absorbing **#textile**  
Zone 3 | liquid absorbing or printed **#textile**

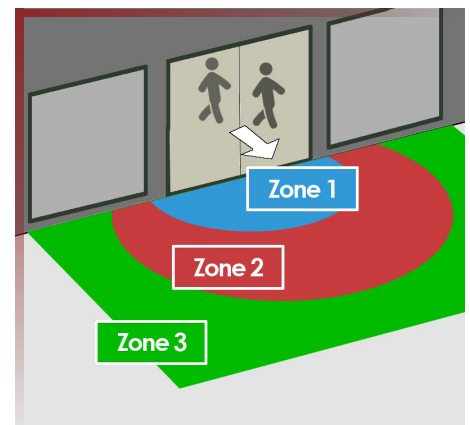


Entrance with intensive pedestrian and wheelchair traffic

Zone 1 | **#Outdoor area**  
Zone 2 | **#Indoor area**  
Zone 3 | Cannot be built

Cleaning surfaces

Zone 1 | **#ribbed rubber**, scratching fiber **#textile**  
Zone 2 | liquid absorbing or printed **#textile**



Entrance with intensive traffic without outdoor matting

Zone 1 | **#Indoor area**  
Zone 2 | **#Indoor area**  
Zone 3 | **#Indoor area**

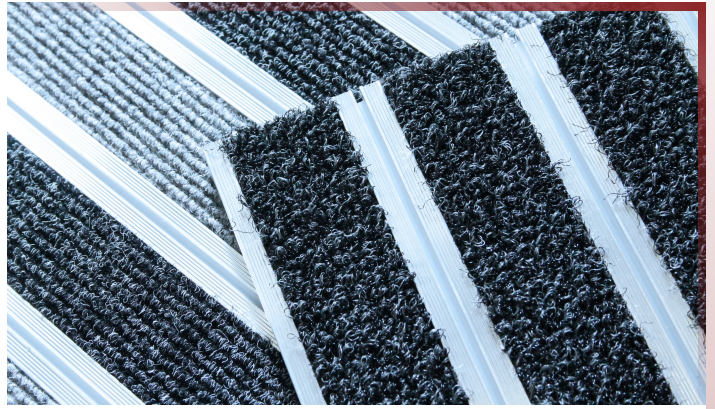
Cleaning surfaces

Zone 1 | **#brush, #ribbed rubber**, scratching fiber **#textile**  
Zone 2 | scratching yarns and liquid absorbing **#textile**  
Zone 3 | printed **#textile**



## SOLUTIONS

The advantage of the Alutrend® entrance mat systems is that they can be adapted individually to entrance and traffic. In particular, the different inlays can be combined with each other, so any kind of individually designed mat system can be put into action.



## ALUTREND ENTRANCE MATTINGS ACCORDING TO ZONE APPROACH

### Zone 1

#outdoor area

### Zone 2

#indoor area | #rotary door

### Zone 3

#indoor area

#### For heavy traffic | Maxi Profile

**Maxi Rub** | Ribbed rubber  
**Maxi Brush** | Brush  
**Maxi Rasp** | Artificial grass  
**Maxi Color Rasp** | Printed artificial grass  
**Maxi Brush & Rub** | Ribbed rubber and brush  
**Maxi Brush & Rasp** | Brush and artificial grass  
**Maxi Rub & Rasp** | Ribbed rubber and artificial grass

**Maxi Brush & Rub** | Brush and ribbed rubber  
**Maxi Brush & Dry** | Brush and liquid absorbent textile  
**Maxi Rub & Dry** | Ribbed rubber and liquid absorbent textile  
**Maxi Charm** | Printed textile

**Maxi Dry Standard** | Needle felt  
**Maxi Dry Premium** | Liquid absorbent textile  
**Maxi Charm** | Printed textile

#### For moderate traffic | Mini Profile

**Mini Rub** | Ribbed rubber  
**Mini Brush** | Brush  
**Mini Rasp** | Artificial grass  
**Mini Color Rasp** | Printed artificial grass  
**Mini Brush & Rub** | Ribbed rubber and brush  
**Mini Brush & Rasp** | Brush and artificial grass  
**Mini Rub & Rasp** | Ribbed rubber and artificial grass

**Mini Brush & Rub** | Brush and ribbed rubber  
**Mini Brush & Dry** | Brush and liquid absorbent textile  
**Mini Rub & Dry** | Ribbed rubber and liquid absorbent textile  
**Mini Charm** | Printed textile

**Mini Dry Standard** | Needle felt  
**Mini Dry Premium** | Liquid absorbent textile  
**Mini Charm** | Printed textile

#### For small traffic | Compact Profile

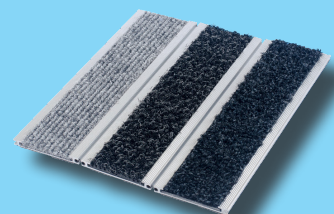
**Compact Rasp** | Scratching yarns

**Compact Rasp & Dry** | Scratching yarns and liquid absorbent textile

**Compact Dry Std.** | Needle felt  
**Compact Dry Premium** | Textile  
**Compact Charm** | Printed textile

## NEWNESS FOR ENTRANCES WITH SMALL TRAFFIC

We've been celebrating 10 years of Alutrend® with the introduction of the Compact type. The newest family member had been developed deliberately for entrances with small traffic.



## ALUTREND OUTDOOR MATTING SYSTEMS

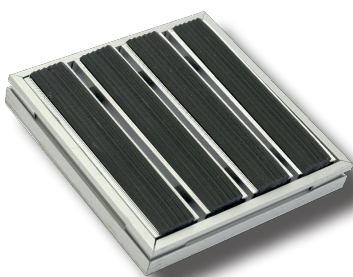
The Alutrend® matting systems are being produced for three different zones. The cleaning begins in the first, so called outdoor zone, before entering the building. The task here is to loosen, remove and to clean rigid and partially liquid dirt from the shoes. By selecting the right outdoor surface it can be prevented, that hard and rigid dirt gets onto the inside of the flooring of the building and does harm to it. With the well chosen indoor surface premature dirt settlements on the ground can be prevented.

The different types of dirt depend on climate and weather; accordingly, the most suitable tread can be selected depending on types of contamination. In Hungary and other temperate climate zone countries, one can prepare for all kinds of dirt, where the weather is variable. The design of the deliberately used mats system, which is divided into zones, is determined by the various surroundings rather than the weather conditions. Asphalt or paved traffic areas where's less greenery, you only have to deal with small amounts of mud. Geographical location - distance from seas, altitude - also affect sort and amount of precipitation.

While developing the Alutrend® outdoor matting systems, the most important aspect was to sell the strongest and most resistant entrance mats on the market. We have made our selection on treads so, that all materials are able to withstand any weather condition, from the extreme cold, snow and ice of Syberia to the extreme heat, sand and dust of the Sahara. Thanks to our large selection on surfaces and their combinations, buildings can be set excellent against environment-specific dirt types. Through the deliberate application of outdoor and indoor matting systems, the cleaning costs of the building can be reduced in a long term and the premature renovation and maintenance of the flooring can be prevented.

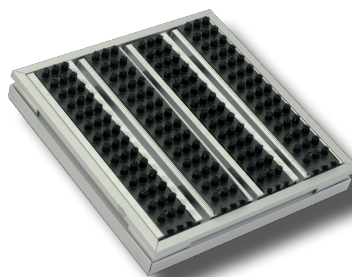
## ALUTREND OUTDOOR TREADS

Typical treads to vary for outdoor matting systems | **#ribbed rubber #brush #textile**



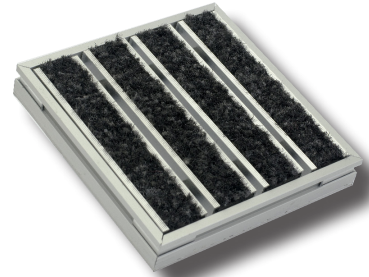
### **#ribbed rubber**

Pulls off strong wet contamination from soles Like a windshield wiper



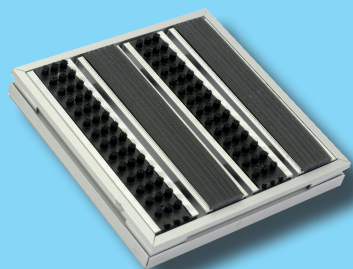
### **#brush**

Brushes stubborn solid dirt off like a broom



### **#textile**

Rubs off various moderate soiling like a sponge



### **THE HIT IN THE FIRST ENTRY ZONE**

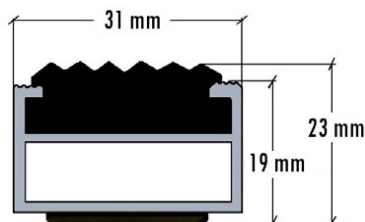
The most popular Alutrend® entrance mat for outdoors is the Maxi Brush & Rub equipped with ribbed rubber and brushes. The ideal choice for significant amounts of dirt.



## ALUTREND RAIL PROFILES FOR OUTDOORS

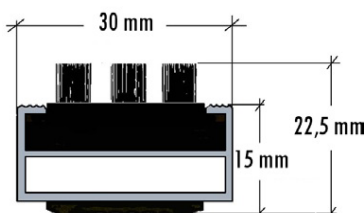
The outdoor mats can be produced with all of the three rails | **#Maxi #Mini #Compact**

Depending on the size and type of traffic, the Alutrend® matting systems can be produced from three different rail sizes in two different structure types. We have developed the **#Maxi** profile for large pedestrian and shopping cart traffic. For medium traffic the **#Mini** and for smaller traffic the **#Compact** profile type is the ideal choice. Different treads can be integrated onto each Alutrend® Maxi and Mini rail profile, while Alutrend® Compact can only be fitted with textile strips.



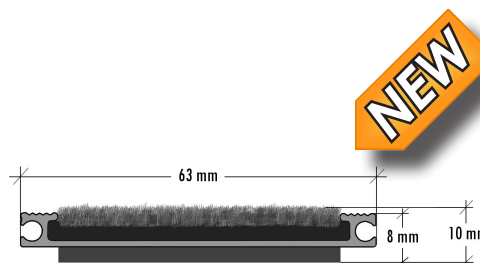
### #Maxi

Robust aluminum alloy structure  
| Suitable for the traffic of more than 1000 pedestrians daily | Suitable for the passage with wheelchairs and shopping carts  
| **#textile**, **#ribbed rubber** and **#brush** treads



### #Mini

Robust aluminum alloy structure  
| Suitable for the traffic of more than 1000 pedestrians daily; maximum 100 pedestrians per hour | Suitable for pedestrian traffic and minimal wheelchair traffic  
| **#textile**, **#ribbed rubber** and **#brush** treads



### #Compact

Low, wide aluminum alloy profile  
| Suitable for the traffic of less than 200 pedestrians a day | For moderate pedestrian traffic  
| **#textile** tread

## ALUTREND OUTDOOR TYPES

### #Maxi | For heavy traffic

**Maxi Rub** | Ribbed rubber  
**Maxi Brush** | Brush  
**Maxi Rasp** | Artificial grass  
**Maxi Color Rasp** | Printed artificial grass  
**Maxi Brush & Rub** | Ribbed rubber and brush  
**Maxi Brush & Rasp** | Brush and artificial grass  
**Maxi Rub & Rasp** | Ribbed rubber and artificial grass

### #Mini | For medium traffic

**Mini Rub** | Ribbed rubber  
**Mini Brush** | Brush  
**Mini Rasp** | Artificial grass  
**Mini Color Rasp** | Printed artificial grass  
**Mini Brush & Rub** | Ribbed rubber and brush  
**Mini Brush & Rasp** | Brush and artificial grass  
**Mini Rub & Rasp** | Ribbed rubber and artificial grass

### #Compact | For small traffic

**Compact Rasp** | Scratching yarns

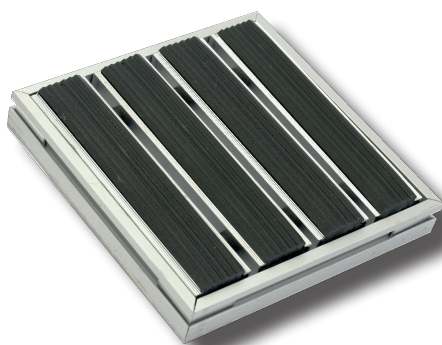
## PRODUCTION OPTIONS

If you have an individual idea regarding the tread or shape, you only have to ask our experts how to put them into practice! For the adapted realization, the treads are variable, or the mold design can be entirely individual.



## ALUTREND MAXI/MINI RUB FOR OUTDOORS

The ace of smooth entrances | **#outdoor area #maxi #mini #ribbed rubber** | 5 years full warranty



The typical installation location of the Maxi/Mini Rub mats are the outer areas of the highly frequented entrances. The primary cleaning of the shoes and wheels is being done by a 4mm high rubber strip with a PVC base. When drafted, the flexibly bending ribs wipe sludge and small stones off from soles and wheels.

**Advantage** | In case of shopping cart and wheelchair traffic, it allows an easy passage.



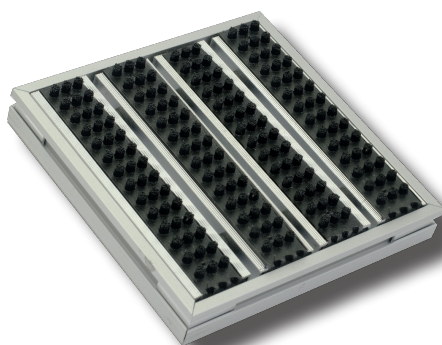
**Wear resistance:** 5.0 ★★★★★

**Cleaning effect:** 4.0 ★★★★★

**Moisture absorption:** 1.0 ★☆☆☆☆

## ALUTREND MAXI / MINI BRUSH FOR OUTDOORS

The king of mudfighters | **#outdoor area #maxi #mini #brush** | 5 years full warranty



The typical installation location of the Maxi/Mini Brush mats are the closest outer areas of the entrances with high pedestrian traffic. The primary cleaning is being carried out by brush strips of 5 mm fiber height. The brushes, which bend when being drafted, pass between the crevices of the soles, loosen dirt, which is swept out when stepping off. The elastic brush strips integrated in the profiles retain their original position during their entire life span.

**Advantage** | Removal of the trapped chewing gum and small pebbles can only be achieved with a brush surface.



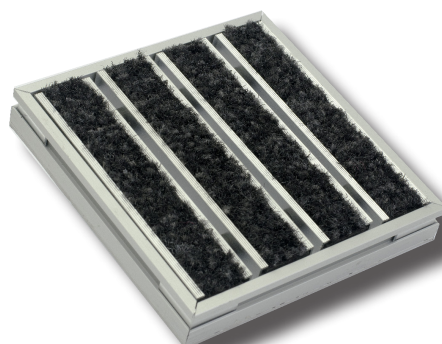
**Wear resistance:** 5.0 ★★★★★

**Cleaning effect:** 5.0 ★★★★★

**Moisture absorption:** 1.0 ★☆☆☆☆

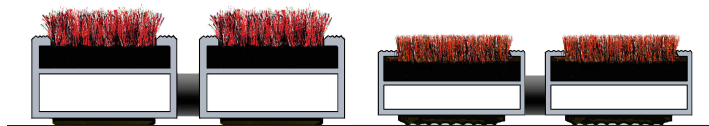
## ALUTREND MAXI / MINI RASP FOR OUTDOORS

Master of scrubbing | **#outdoor area #maxi #mini #textile** | 5 years full warranty



The typical installation location of the Maxi/Mini Rasp mats are the closest to the highly frequented entrances in outdoor areas, suitable for high traffic of wheels and pedestrians. The primary cleaning happens through polyamide carpet strips of 3 mm fiber height. The flexible scraping fibers remove smaller solid dirt and absorb liquid spongewise.

**Advantage** | Ideal for large amounts of moist contamination, since its liquid suction force is very high.



**Wear resistance:** 5.0 ★★★★★

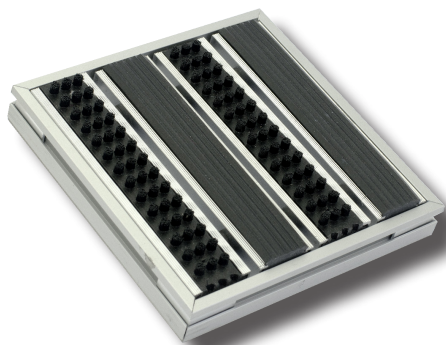
**Cleaning effect:** 4.0 ★★★★★

**Moisture absorption:** 4.0 ★★★★★



## ALUTREND MAXI / MINI BRUSH & RUB FOR OUTDOORS

Combined effectiveness | #outdoor area #maxi #mini #brush #ribbed rubber | 5 years full warranty



The typical installation location of the Maxi/Mini Brush & Rub mats are the closest outer areas of the highly frequented entrances, suitable for reduced traffic with wheels and high pedestrian traffic. The primary cleaning succeeds by strips of brushes and ribbed rubber. The flexible brushes and ribs clean large solid dirt and mud at the same time, as if cleaning with broom and windscreen wipers happened at the same time.

**Advantage** | This combination is the ideal surface for coarse and stubborn dirt.



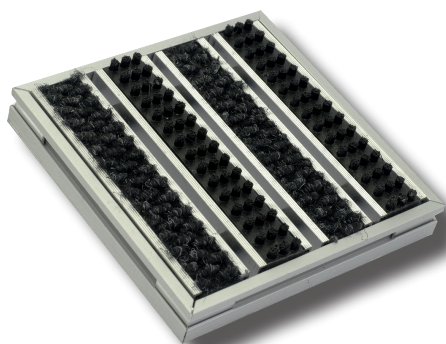
**Wear resistance:** 5.0 ★★★★★

**Cleaning effect:** 5.0 ★★★★★

**Moisture absorption:** 1.0 ★☆☆☆☆

## ALUTREND MAXI / MINI BRUSH & RASP FOR OUTDOORS

Dirt trapping with finesse | #outdoor area #maxi #mini #brush #textile | 5 years full warranty



The typical installation location of the Maxi/Mini Brush & Rasp dirt traps are the closest outer areas of the highly frequented entrances, suitable for minimal traffic with wheels and high pedestrian traffic. The primary cleaning happens through brush and polyamide carpet strips. When stepping on, the bending brushes and scraping fibers clean the collected mud, liquid and small solid dirt, as if you were brushing with broom and cleaning with sponge at the same time.

**Advantage** | Most effective in case of mixed types of contamination.



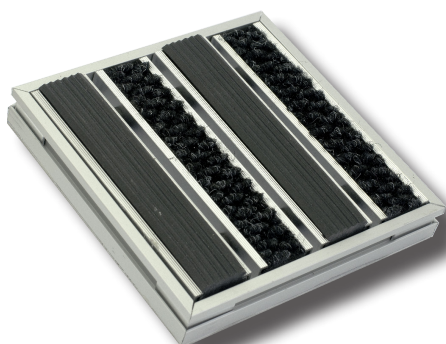
**Wear resistance:** 5.0 ★★★★★

**Cleaning effect:** 5.0 ★★★★★

**Moisture absorption:** 3.0 ★★★☆☆

## ALUTREND MAXI / MINI RUB & RASP FOR OUTDOORS

Alloyed power | #outdoor area #maxi #mini #ribbed rubber #textile | 5 years full warranty



The typical installation location of the Maxi/Mini Rub & Rasp mats are the closest outer areas of the highly frequented entrances, suitable for large traffic of wheels and pedestrians. The primary cleaning happens by ribbed rubber strips and polyamide fibers. The flexible ribs and scratch fibers clean sludge, liquids and smaller solid dirt together as if you were working with a windshield wiper and a sponge at the same time.

**Advantage** | Optimal solution for mixed traffic.



**Wear resistance:** 5.0 ★★★★★

**Cleaning effect:** 4.0 ★★★★★

**Moisture absorption:** 3.0 ★★★☆☆

## ALUTREND COMPACT RASP FOR OUTDOORS

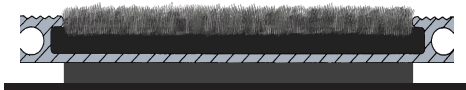
The small coon | **#outdoor area #compact #textile** | 1 year full warranty

**NEW**



The typical installation location of the Compact Rasp mats is the outer area the closest to the entrance door. The primary cleaning succeeds with 6.5 mm high polyamide fibers. The aluminum structure, which is connected with unbreakable elements, prevents deformation and slipping during use, thus preventing accidents.

**Advantage** | Completes the majority of the cleaning tasks at the entrance and sucks up liquid.



**Wear resistance:** 5.0 ★★★★★

**Cleaning effect:** 4.0 ★★★★★

**Moisture absorption:** 4.0 ★★★★★

## ALUTREND INDIVIDUAL SOLUTIONS FOR OUTDOORS

Marketing at the door | **#greet #facade #message**



The aim of buildings with commercial purpose is generally to receive new and returning visitors. In the business world, the clear goal is to lure customers back. - independent from service sector. This is achievable with the most diverse methods, without any doubt this is difficult to achieve without "business formalities". The individual aluminum profile branded mats are the solution in the fight against dirt and to attract the attention of the customers at the entrance. E.g. if there are two restaurants in the same street, none of them is known, but one would like to eat somewhere, how to decide then? Most of them decide, after the first impression, which in this case is the appearance of the building and its surroundings. The primary message is transmitted through the exterior of the building and the foreground. Our recommendation: transfer messages already at the entrance!

## ALUTREND MAXI / MINI COLOR RASP FOR OUTDOORS

The magic carpet | **#outdoor area #maxi #mini #textile** | 1 year full warranty

**NEW**



The typical installation location of the Maxi/Mini Color Rasp mats are the closest outer areas of the highly frequented entrances. The primary cleaning happens through colour-printed nylon carpet strips of 15 mm fiber height. The scraping fibers, which bend flexibly during tripping, clean sludge, moisture and small solid dirt spongewise.

**Specialty** | 16 color customizable colorful graphics.



**Wear resistance:** 4.0 ★★★★★

**Cleaning effect:** 5.0 ★★★★★

**Moisture absorption:** 3.0 ★★★★★



## ALUTREND INDOOR MATTING SYSTEMS

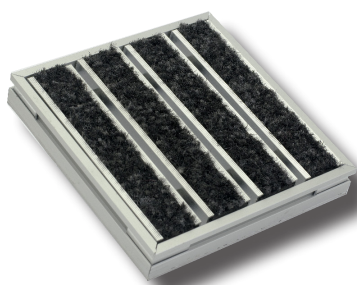
The Alutrend® mat systems are manufactured for three different clean-up zones. The indoor zones can be divided into two contingents: the second and third clean-up zone, the area inside the building, as well as wind deflector, the rotary door and the wider foreground. The cleaning surface focuses on absorbing liquid and to clean up minor dirt by side; going further inside, only the sucking of the liquids takes place. With the right selection of internal surfaces, sludge and liquid contamination can be prevented. In addition, they protect against slipping and ensure a clean impression. Forming one unit with the tread, it is also provided for a decorative impression. The main aspect of the Alutrend® interior mats systems' design was besides the durability and high performance, to meet every expectation of the 21st century.

In this area, most selectable and combinable treads are made of textiles or textile combinations. The combination of textile and brushes or ribbed rubber is both nice and effective at the same time; the textile surfaces give the foreground a distinctive individual impression. The optimal pairing of the functions can lead to augmenting the cleaning effect and reducing the maintenance costs of the building. The key to the conscious use of the mats is the ability to reduce maintenance costs.

Depending on the climate, usage and possibilities, the optimal surface for the interior is selectable. In the climatic zone of Hungary and the neighbor countries, the annual rainfall and frequency clearly indicate that one should expect large quantities of water everywhere. The amount is also affected by the geographic location. The rainwater mixed with dirt and other contaminants not only leaves stains, but also creates slippery floor surfaces. To avoid accidents, the indoor-based, multifunctional (cleaning and liquid sucking) mat system can be the ideal solution. The production of several zones also offer more possibilities to create a modern and tasteful interior.

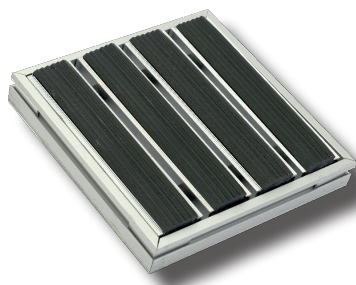
## ALUTREND INDOOR TREADS

Typical treads of the indoor mats | **#textile #ribbed rubber #brush**



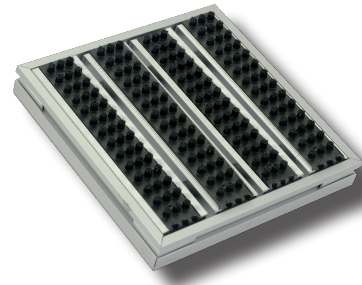
**#textile**

Rubs off various moderate soiling like a sponge



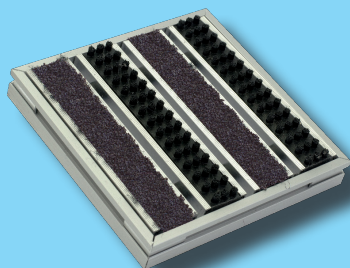
**#ribbed rubber**

Pulls off strong wet soaks from soles like a windshield wiper



**#brush**

Brushes off stubborn solid soils like a broom



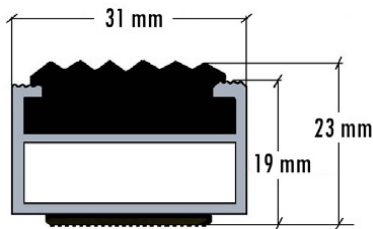
### THE HIT IN THE INNER ENTRY ZONES

The most popular Alutrend® mat system is the Maxi and Mini Brush & Dry, with mounted brush and textile strips. This model is best suited to cleaning significant amounts of mixed dirt.

## ALUTREND RAIL PROFILES FOR INDOORS

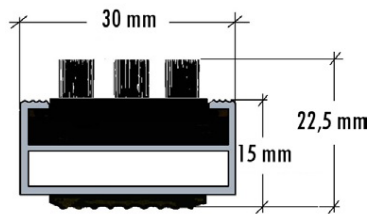
The indoor mats can be produced from all three types of rails | **#Maxi #Mini #Compact**

Depending on the size and type of pedestrian traffic, the Alutrend® mats can be produced from three types of rails and two types of structures. We have developed the **#Maxi** profile for large pedestrian and shopping cart traffic. For moderate traffic the **#Mini**, and for smaller traffic the **#Compact** profile is the ideal choice. The Alutrend® Maxi and Mini Profiles can be used to integrate all treads into them, while the Alutrend® Compact is suitable for textile surfaces.



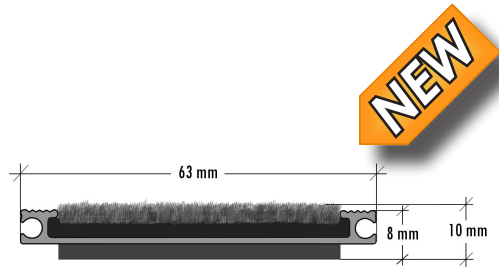
### #Maxi

Robust aluminum alloy structure  
| Suitable for the traffic of more than 1000 pedestrians daily | Suitable for the passage with wheelchairs and shopping carts | **#textile**, **#ribbed rubber** and **#brush** treads



### #Mini

Robust aluminum alloy structure  
| Suitable for the traffic of more than 1000 pedestrians daily; maximum 100 pedestrians per hour | Suitable for pedestrian traffic and minimal wheelchair traffic | **#textile**, **#ribbed rubber** and **#brush** treads



### #Compact

Low, wide aluminum alloy profile  
| Suitable for the traffic of less than 200 pedestrians a day | For moderate pedestrian traffic | **#textile** tread

## ALUTREND INDOOR TYPES

### #Maxi | For heavy traffic

**Maxi Dry Standard** | Needle felt  
**Maxi Dry Premium** | Liquid absorbent textile  
**Maxi Brush** | Brush  
**Maxi Rub** | Ribbed rubber  
**Maxi Brush & Dry** | Brush and textile  
**Maxi Rub & Dry** | Ribbed rubber and textile  
**Maxi Brush & Rub** | Brush and ribbed rubber  
**Maxi Charm** | Printed textile

### #Mini | For medium traffic

**Mini Dry Standard** | Needle felt  
**Mini Dry Premium** | Liquid absorbent textile  
**Mini Brush** | Brush  
**Mini Rub** | Ribbed rubber  
**Mini Brush & Dry** | Brush and textile  
**Mini Rub & Dry** | Ribbed rubber and textile  
**Mini Brush & Rub** | Brush and ribbed rubber  
**Mini Charm** | Printed textile

### #Compact | For small traffic

**Compact Dry Std.** | Needle felt  
**Compact Dry Premium** | Liquid absorbent textile  
**Compact Charm** | Printed textile



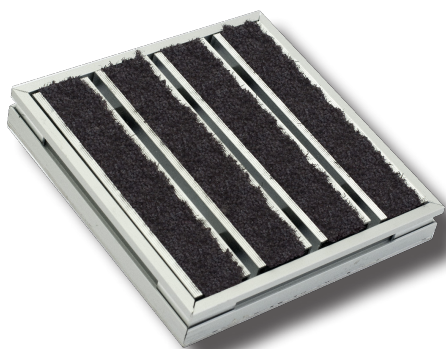
## PRODUCTION OPTIONS

For Alutrend® Maxi and Mini, there is no ready-made size table, because each production is individual and adapted to the specific building, any shape and size can be designed, the spacers also make fine adjustments possible.



## ALUTREND MAXI / MINI DRY STANDARD / PREMIUM FOR INDOORS

Master of Drying | #indoor area #maxi #mini #textile | 5 years full warranty



The typical installation location of the Maxi/Mini Dry Standard/Premium mats are the highly frequented interior areas of the building, e.g. wind deflector, rotary door and foreground. The secondary cleaning is performed by needle felt (Standard) or polyamide fiber (Premium) mat strips. The moisture-absorbing strips suck and seal liquid contamination sponge-like, while the scratch fibers clean dirt.

**Advantage** | 1 square meter of premium surface can contain up to 5 litres of water and several kilos of dust.

**Wear resistance:** 5.0 ★★★★★

**Cleaning effect:** 4.0 ★★★★★

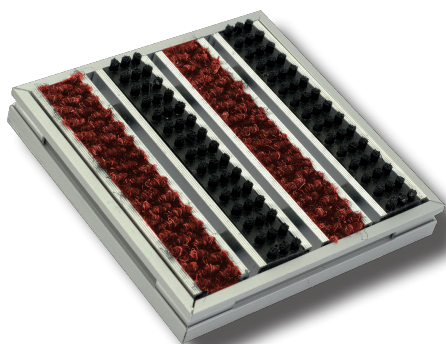
**Moisture absorption Prem.:** 5.0 ★★★★★

**Moisture absorption Std.:** 4.0 ★★★★★



## ALUTREND MAXI / MINI BRUSH & DRY FOR INDOORS

Coupled performance | #indoor area #maxi #mini #brush #textile | 5 years full warranty



The typical installation location of the Maxi/Mini Brush & Dry dirt traps are the internal traffic areas of the building, e.g. wind deflector, rotary door and foreground, suitable for large pedestrian traffic and smaller traffic with wheelchairs. The secondary cleaning is carried out by 5 mm high brushes and 3 mm high polyamide fibers at the same time.

**Advantage** | This surface combination is most effective in case of mixed types of contamination - even without outdoor mat.

**Wear resistance:** 5.0 ★★★★★

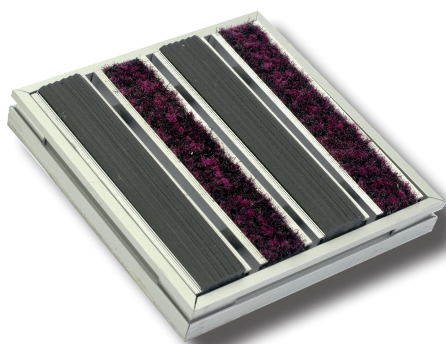
**Cleaning effect:** 4.0 ★★★★★

**Moisture absorption:** 4.0 ★★★★★



## ALUTREND MAXI / MINI RUB & DRY FOR INDOORS

Smooth productivity | #indoor area #maxi #mini #ribbed rubber #textile | 5 years full warranty



The typical installation location of the Maxi/Mini Rub & Dry mats are the internal traffic areas of the building, e.g. wind deflector, rotary door and foreground, suitable for large pedestrian and wheelchair traffic. The secondary cleaning is carried out by rubber strips with 4 mm high ribs and polyamide of 3 mm fiber height.

**Advantage** | This mixed design is ideal where's less solid and more wet contamination to find.

**Wear resistance:** 5.0 ★★★★★

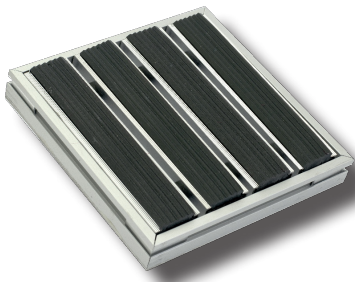
**Cleaning effect:** 4.0 ★★★★★

**Moisture absorption:** 4.0 ★★★★★



## ALUTREND MAXI / MINI SOLUTIONS FOR THE MIDDLE ZONE IN THE INTERIOR

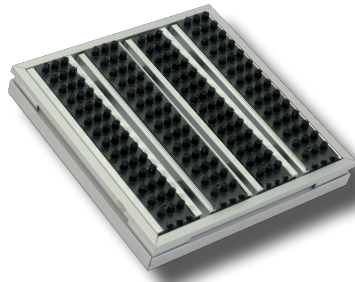
Mat systems for the central zone and the exterior | **#outdoor #indoor #wind deflector #rotary door**



Alutrend® Maxi / Mini Rub

**#ribbed rubber**

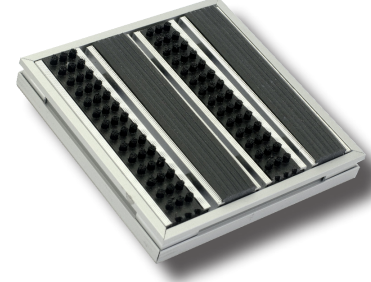
Easy passage and fast mud removal



Alutrend® Maxi / Mini Brush

**#brush**

Powerful cleaning of stubborn dirt



Alutrend® Maxi / Mini Brush & Rub

**#brush #ribbed rubber**

Combined high-efficiency solution for swing doors

## ALUTREND INDIVIDUAL SOLUTIONS FOR INDOORS

Marketing at the door | **#greet #facade #message**



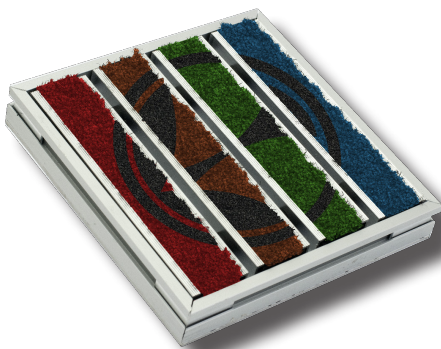
Holmes Place Budapest

If a customer or guest is already in the shop, office building, or restaurant, two things can happen. If pleasure had proved through what was to see and to buy there, the customer will return, if not, then certainly not. The question however is, does the customer only return because of the product? Of course not, because environment and positive experience both play a very important role.

In addition to the individual PVC floor coverings, wall and furniture panels and carpet floors, Cleartex also offers the possibility to customize the entrances to the corporate identity. The extraordinary interior highlights your entrance from the grey, attracts visitors and makes them remind!

## ALUTREND MAXI / MINI CHARM FOR INDOORS

Master of scrubbing | **#outdoor area #maxi #mini #textile** | 5 years full warranty



The typical installation location of the Maxi/Mini Charm mats are the inner frequented areas of the building. The secondary/tertiary cleaning is carried out by means of dyed polyamide carpet strips of 5 mm fiber height. The moisture absorbing fibers absorb liquid like a sponge while their high-quality surface ensures the transfer of messages.

**Specialty** | Pantone colors create colorful graphics, the most diverse inscriptions can be printed.



Wear resistance: **5.0** ★★★★★

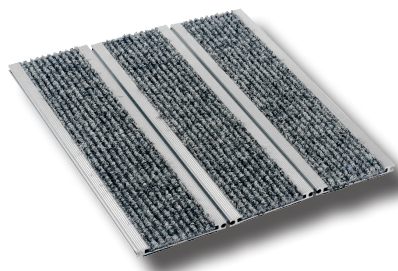
Cleaning effect: **4.0** ★★★★★

Moisture absorption: **4.0** ★★★★★



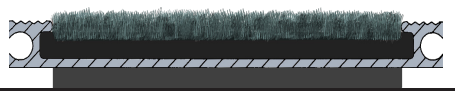
## ALUTREND COMPACT DRY FOR INDOORS

The smallest | #indoor area #compact #textile | 1 year full warranty



The typical installation location of the Compact Dry mats are the inner, less frequented areas of the building. Here the secondary cleaning is carried out by needle felt (Standard) or polyamide (Premium) mat strips. The liquid sucking fibers absorb moisture spongily, while the scratching fibers remove solid dirt.

**Advantage** | By simply taking out the stone tiles, the die can easily be designed for this type without having to touch the concrete base.



**Wear resistance:** 5.0 ★★★★★

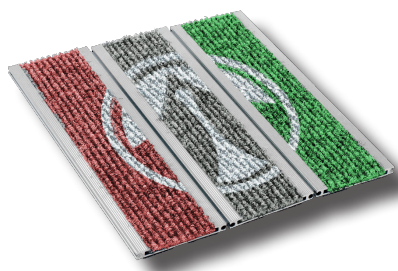
**Cleaning effect:** 4.0 ★★★★★

**Moisture absorption Prem.:** 5.0 ★★★★★

**Moisture absorption Std.:** 4.0 ★★★★★

## ALUTREND COMPACT CHARM

The little charmur | #indoor area #compact #textile | 1 year full warranty



The typical installation location of the Compact Charm branded mats are the inner, less frequented areas of the building. The secondary or tertiary cleaning (depending on the clean-running zone) is carried out by dyed polyamide carpet strips of 5 mm fiber height. The moisture absorbing fibers absorb liquid like a sponge, while their high-quality surface ensures the transmission of the messages.

**Specialty** | Pantone colors create colorful graphics, the most diverse inscriptions can be printed.



**Wear resistance:** 5.0 ★★★★★

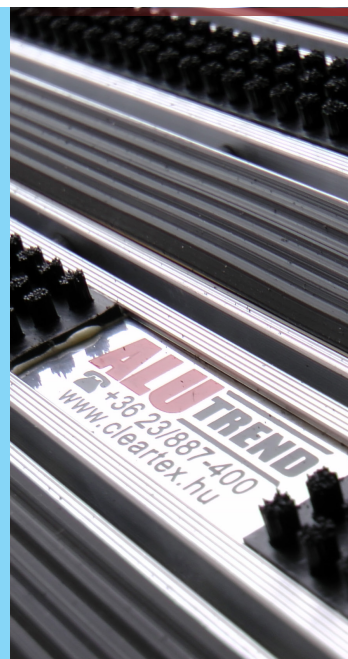
**Cleaning effect:** 4.0 ★★★★★

**Moisture absorption:** 4.0 ★★★★★

## ALUTREND MATTING SYSTEMS AND INTERIOR DESIGN

The specialty of the mat systems, in contrast to conventional floor mats is - among other characteristics - their variability. It itches not only the eye of an interior designer, if rectangular black mats lie everywhere on the floor. These usually destroy the unity of the interiors of such buildings, where a lot of money was spent for planning and realization. Doesn't that sound like luxury cars be rolling on uniform black steel rims?

The designs of the mat systems differ not so much from those of the floor coverings, additionally the colorful and freely designable options of the Alutrend® systems result uncompromising solutions. It is also important to take into consideration, that the effective system design depends on traffic direction and the number of steps to be taken, the shapeable zones and the external environment. End result is, that a relatively large matting system does perform a thorough cleaning work. If the cleaning of the soles takes place on a relatively large surface, it is recommended to design them in a decorative way.



## ALUTREND MATTING SYSTEM SPECIALTIES

Production to individual needs | **#rotary door**  
**#shape #tread**

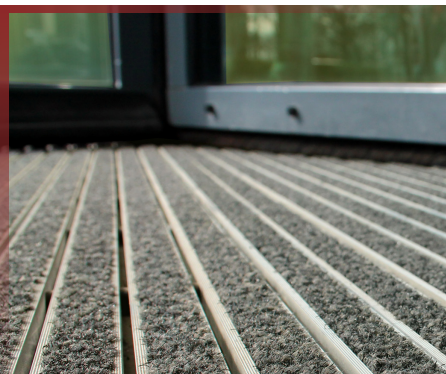
The advantage of the Alutrend® systems is that they can be installed practically in any form, thus fulfilling any special requirement. The most popular such clean-up zone is the rotary door, which separates inside from outside. The entrance mat, which is laid onto the rotary door, is made up of sectors which differ from conventional mats, not only in form, but also in the assembly of the surfaces. Its curiosity is that different treads can be used in summer or winter - depending on requirements. Finally many individual aesthetic shapes can be produced in a variety of different sizes, so it is possible to create any shape possible, also with mixed running surfaces, even individually printed branded mats are possible.

The rotary doors are usually parts of office buildings and hotels: in most cases they are to find in buildings with a large foreground. The main task of the entrances is to let passers through, while keeping the climate of the building. Measurements also confirm the fact that turning doors are much more effective than conventional entrances, and much less air is being exchanged when passing through. In winter the warm air and in summer the pleasantly cool air is kept indoors. The other advantage is that when several steps are taken, the cleaning of shoes is also much more effective - if the appropriate cleaning surfaces have been laid. Thanks to the Alutrend® installation options, several optimal solutions can be found. In addition to the combined treads, the ranges of the rotary doors can also be divided into two segments in order to achieve the best possible cleaning effect.

**Hint** | The advantage of the rotary doors is that they clean efficiently even on smaller surfaces, because more steps have to be taken here because of the slow passage, so more dirt is being removed and more liquid is sucked up. Therefore, it is recommended to apply brushes in the outer half and textile surfaces onto the inner half.

## ALUTREND MATTING SYSTEMS FOR ROTARY DOORS

The round world of mat systems | **#rotary door #effective #decorative #adapting**



**#effective**

Excellent cleaning performance and dirt collection



**#decorative**

Tasteful matting system, aesthetic entrance



**#adapting**

Weather-capable interchangeable circle-quarters

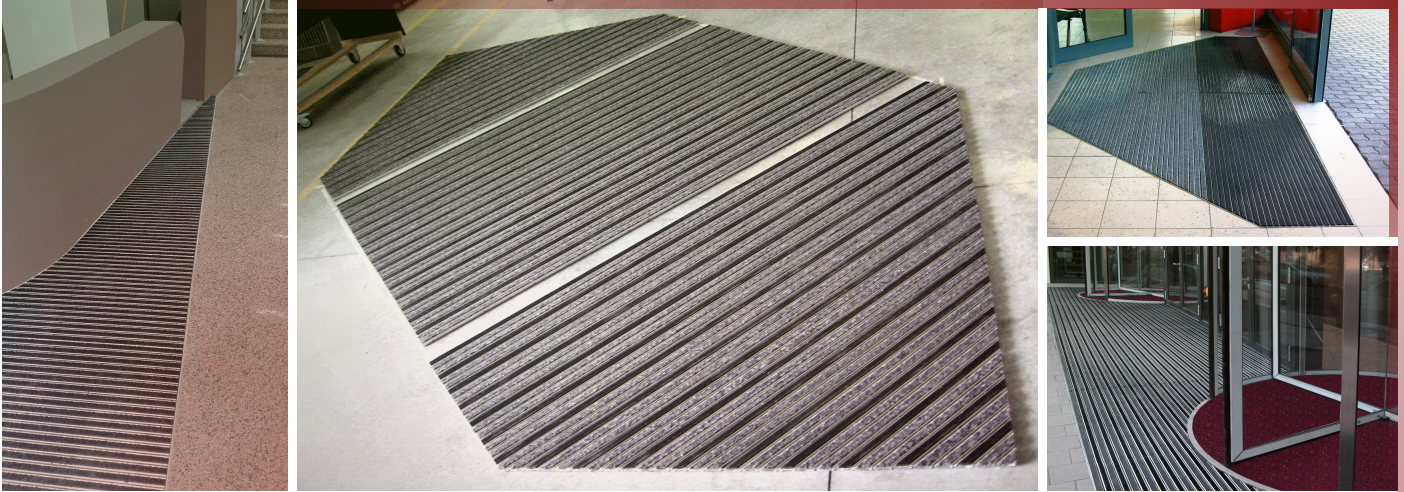
The rotary doors began to spread in New York at the beginning of the last century. You might think, because they protect the interior of the building with high efficiency against dirt and temperature fluctuations, but the real reason is much more prosaic. The inventor, who got it licensed, did not like the courtesy, especially he did not want to open doors for women. To his bad luck however, it had quickly spread that from courtesy the men first enter the building to push the then still without engines operating rotating doors.



## ALUTREND SHAPES

Any size and shape | **#polygonal #excentric #rounded**

Alutrend® is the optimal starting point to form a flashy and effective entrance. The distinctively shaped elements of the aluprofile mats make it possible to optimally clean the soles depending on the zone. In addition, the installation of the system is achieved by forming a unit with the interior.



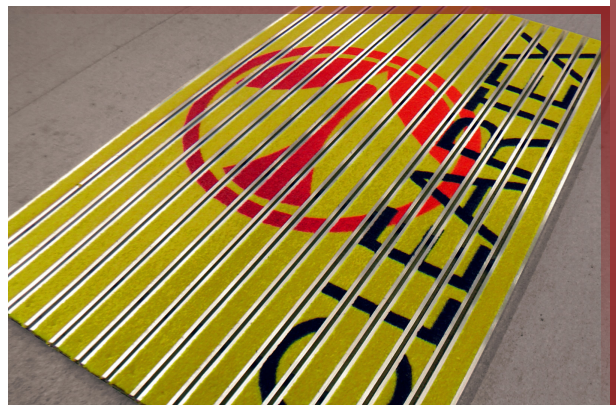
The mat systems and floor surfaces can be designed to form a harmonious unit with the appearance of the interior. With deltoid, trapezoid, circular and elliptical shapes and their combinations, amorphous and excentric dirt collection systems can be created. Experiences show, if the decorative shaping takes place deliberately according to the zone approach, in addition to the aesthetics the cleaning effect can be increased a lot, whereby the long kept purity of the interior "shine" is maintained for a long time.

## ALUTREND TEXTILE TREADS

The colorful world of entrance mats | **#mood #image #design**

Colors have a great influence on people, they trigger different moods. Most sensuous impressions of mankind are triggered by colors. The tread's bright colors spread the room in all directions, by side they lift the mood. The crosswise striping on the floor expands the room, but gives the impression of being shorter than it is in reality. The shiny Alutrend® rails create an elegant impression, while the integrated cleaning surfaces ensure harmony with the interior and compensate for the cold elegance of the aluminum profiles.

More than 40 colorful textiles of the highest quality and 3 different kinds of printed textile treads are available for the Alutrend® Indoor mats. For Outdoor mats, there are artificial grass surfaces, which can be printed with 16 colors. For the perfect realization, great imagination and precise visualization is needed, the rest is done at the carpeting and by our colleagues.





# CLEARTEX ALUTREND®

## ALUMINIUM PROFILE MATTING SYSTEMS

- LONG LASTING SOLUTIONS FOR HIGHLY FREQUENTED ENTRANCES
- STRONG, ALUMINIUM PROFILE CONSTRUCTION
- WEAR AND SLIP PROOF CLEANING SURFACES
- EXTREMELY LONG LIFE
- INDOOR AND OUTDOOR VARIATIONS
- INDIVIDUAL SHAPES WITHOUT COMPROMISE
- INDIVIDUAL PLANNING AND REALIZATION
- OPTIONAL MAINTENANCE SERVICES

## APPLICATION POSSIBILITIES

- OFFICE BUILDINGS, SHOPS, BUREAUS, SCHOOLS
- SHOPPING CENTRES, SPORTS FACILITIES
- MUSEUMS, THEATRES, EVENT HALLS
- HOTELS, SPAS, HOSPITALS
- FACTORIES, TRAFFIC NODES, AIRPORTS

**#cleartex** since 1993

**#entrance mats since** since 1993

**#matting systems** since 1996

**#alutrend** since 2006

**#alutrend maxi** since 2006

**#alutrend mini** since 2008

**#alutrend compact** since 2016

## OTHER CLEARTEX SOLUTIONS

- TEXTILE AND PLASTIC-GRID FLOOR MATS
- CARPET, PVC AND LINOLEUM FLOORING
- WALL AND FURNITURE WALLPAPERS WITH CUSTOM PRINTING
- INDUSTRIAL COATINGS AND SLIP RELIEF
- HYGIENIC AND CLEAN ROOM COATINGS



## SATISFIED CLIENTS

- **COMMERCE/SERVICES:** ALDI, ALBA PLAZA, ALLE, AUCHAN, ARENA PLAZA, ARKAD SHOPPING CENTRE, DUNA PLAZA, LIDL, SPAR, WESTEND CITY CENTRE
- **FINANCE:** ERSTE, CIB, FHB, K&H, MKB, OTP
- **OFFICE BUILDINGS:** BAROSS 52, KÁLVIN CENTRE, K4, ROOSEVELT 7/8, R70 OFFICE COMPLEX
- **CULTURE/SCHOOL/SPORTS:** SPORT CENTRE BUDA, GROUPAMA ARENA, GARDENING ACADEMY OF KECSKEMÉT, MÜPA, HOUSE OF FATES
- **HOTEL:** COURTYARD BUDAPEST CITY CENTER, HILTON BUDAPEST, IMOLA HOTEL PLATAN, MARRIOTT BUDAPEST, RAMADA BUDAPEST, THERMAL HOTEL VISEGRÁD
- **INDUSTRY/TRANSPORT:** AUDI GYŐR, BOSCH, GYŐRI BISCUITS, KÖKI, PHOENIX-MECANO, RÁBA VEHICULAR INDUSTRY HOLDING, RICHTER GEDEON, ROCHE, SAMSUNG

**BE SATISFIED AS WELL!**

**CHOOSE OUR ENTRANCE MATS  
AND FORGET ABOUT ALL COMPROMISES!**

## CLEARTEX LTD.

**ADDRESS:** GYÁR U. 2., H-2040 BUDAÖRS

**PHONE:** +36 30 413 8175 | **E-MAIL:** TAMAS.KICSKA@CLEARTEX.HU

**WEB:** ALUTREND.CO.UK

**COMMUNITY:** FACEBOOK.COM/CLEARTEX | YOUTUBE.COM/CLEARTEX



CLEARTEX



**CLEARTEX LTD.**

GYÁR UTCA 2., BUDAÖRS H-2040

PHONE: +36 30 413 8175 | E-MAIL: TAMAS.KICSKA@CLEARTEX.HU | WEB: ALUTREND.CO.UK

**CLEARTEX ALUTREND®** ALUPROFILE ENTRANCE MATTING SYSTEMS | 2017